



# **SOUTHEAST PAVEMENT PRESERVATION PARTNERSHIP**

## **2015 TASK FORCE REPORT**

**Integrating Pavement Preservation into  
Pavement Management Systems (PMS)**

# TASK FORCE MEMBERS

---

- ✘ Mark Chenevert – LADOTD
- ✘ Jim Feda, Jr. – SCDOT
- ✘ Moussa Issa – GDOT
- ✘ Tracy Nowaczyk - KYTC
- ✘ James Maxwell – TDOT
- ✘ Heath Patterson – MDOT
- ✘ Jared Ray – LADOTD
- ✘ Ernay Robinson-Perry – GDOT
- ✘ Ritchie Swindell –GDOT
- ✘ John Watson- SCDOT
- ✘ Richard Turner – Charleston County SC
- ✘ Larry Scofield – IGGA
- ✘ Luis Rodriquez – FHWA
- ✘ Jim Edgerton – Agile Assets, Inc.

## DELIVERABLE PRODUCTS / EXPECTED COMPLETION:

- ✘ Develop a survey to determine the extent to which pavement preservation has been integrated into DOT PMS systems and the criteria / factors being used.
  - + **Everybody likes a good survey...**
- ✘ Identify trends and gaps that can help us develop project statements and activities to address identified gaps.
- ✘ <https://www.surveymonkey.com/s/TMMXY9V>

Integrating Pavement Preservation into the Pavement Management System (PMS) Survey - Windows Internet Explorer

http://surveymonkey.com/s.aspx?sm=sWUjQZLppEmIPAEasRTIBA%3d%3d

File Edit View Favorites Tools Help

Integrating Pavement Preservation into the Pavement Management System (PMS)

Pavement Management System

**1. Does your transportation agency have a Pavement Management System (PMS)?**

a. If yes, does your PMS include individual preservation treatments or a general pavement preservation strategy as part of its pavement management strategies? Go to question 2

b. If no, please explain how you manage your pavements and thank you for your help.

Yes

No

Comments

**2. Please describe your PMS:**

a. Type – commercial or in-house

b. Referencing system – LRS or geospatial

c. Are any upgrades planned to account for new provisions of MAP-21?

d. What treatment categories are included in the PMS (routine, corrective, preservation, rehabilitation, reconstruction)?

e. How old is your present PMS?

Done

Internet | Protected Mode: On

100%

9:23 AM  
5/30/2014

<https://www.surveymonkey.com/s/TMMXY9V>

# SURVEY RESULTS

---

- ✘ Seven State DOTs and one Local Highway Agency answered the survey.
- ✘ Six agencies indicated that their PMS include individual preservation treatments or a general pavement preservation strategies. They also have designated funding for pavement preservation.
- ✘ One agency indicated that they don't have an operational PMS.

# SURVEY RESULTS

---

- ✘ One agency indicated that although preservation treatments are used in their State, tracking these treatments is difficult because of the mechanism by which the treatments are placed and paid (purchase order), instead of standard contracting mechanism.
- ✘ Five agencies reported that they generate a list of recommended pavement preservation projects.

# SURVEY RESULTS

---

- ✘ Crack sealing, Joint sealing, Chip Seals, Micro Surfacing, Thin HMA overlays, Grinding, Spall repairs and Slab replacements are the most popular preservation treatments used by the agencies.
- ✘ Pavement Smoothness is the most common pavement condition factor used by most agencies follow by a cracking/distress factor.

# SURVEY RESULTS

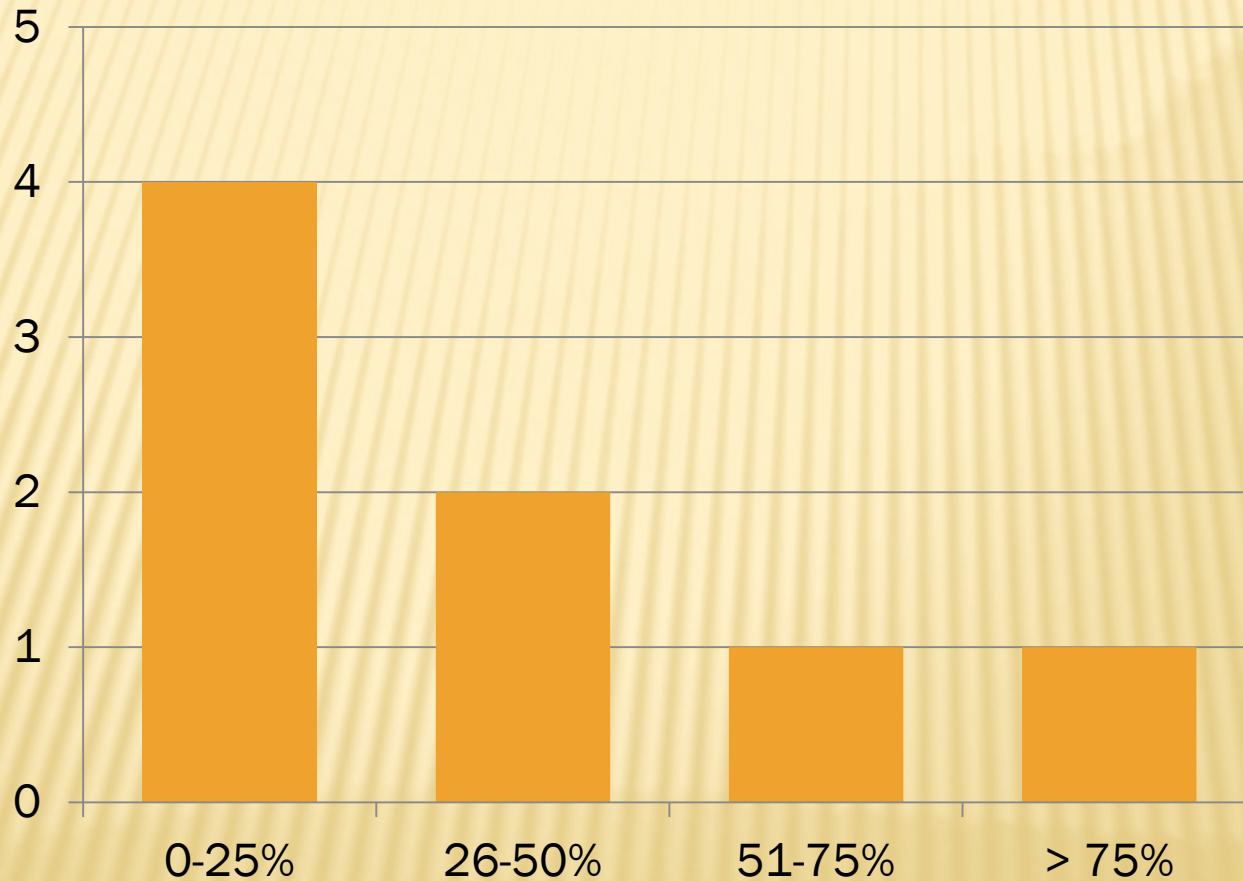
---

- ✘ Six agencies indicated that their PMS decision trees or matrices include preservation treatments.
- ✘ Situations in which preservation activities caused a negative benefit.
  - + One instance in which Micro Surfacing failed skid test.
  - + Crack sealing and chip seal resulted in rougher pavement.
  - + Crack sealing applied too liberally impacted ride and pavement condition rating.



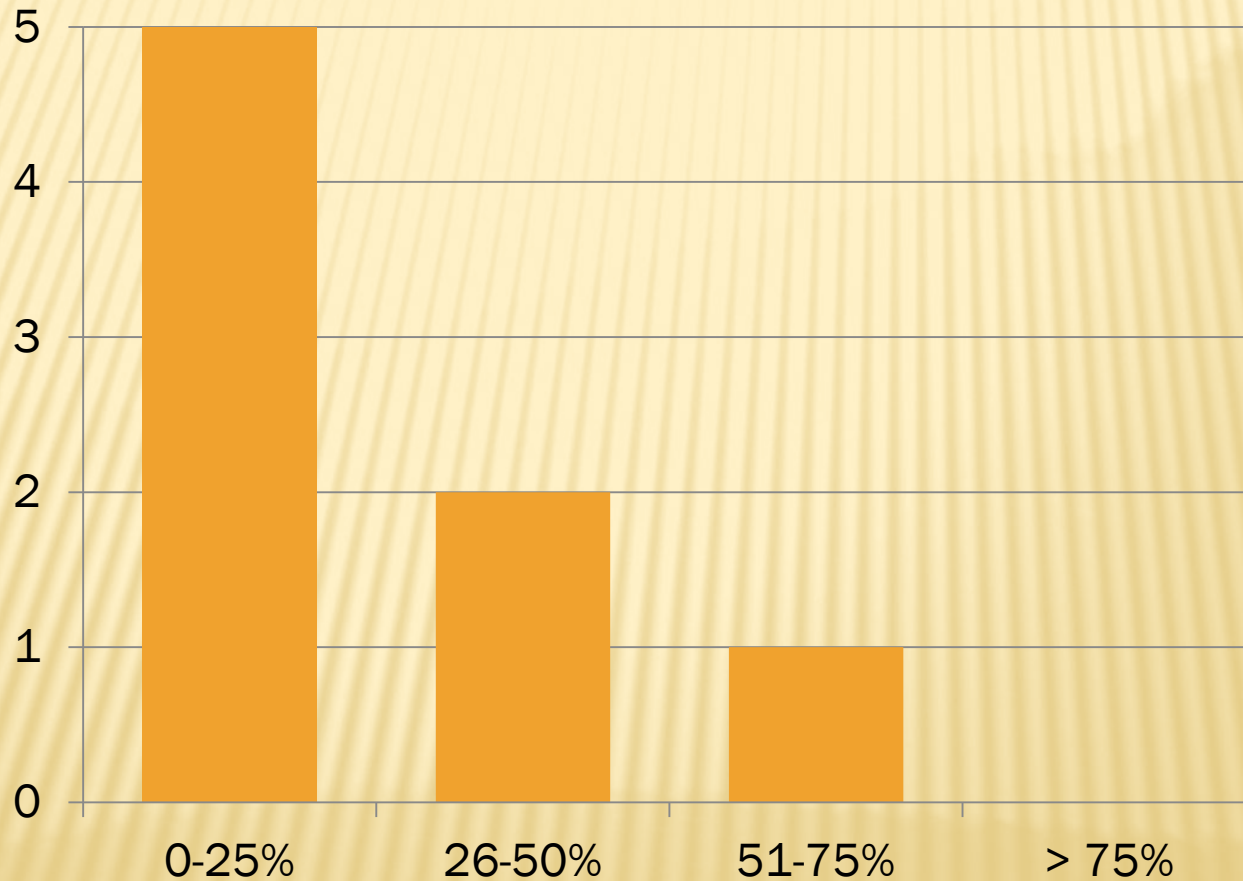
# PERCENT OF PAVEMENT PRESERVATION ACTIVITIES DONE WITH AGENCY FORCES

No. Agencies



# PERCENT OF PAVEMENT PRESERVATION ACTIVITIES DONE WITH AGENCY FORCES

No. Agencies



# PROPOSED RECOMMENDATIONS AND ACTIVITIES/ ACTION ITEMS

---

- ✘ Give to agencies a new opportunity to fill the survey. Until May 1<sup>st</sup>, 2015.
  - + <https://www.surveymonkey.com/s/TMMXY9V>
- ✘ Expand the survey to other regions of the country.

# PROPOSED RECOMMENDATIONS AND ACTIVITIES/ ACTION ITEMS

---

- ✘ Use research results such as NCAT's Lee County Rd. 159, to enhance agencies' pavement preservation programs and PMS.
  - + Treatments service life & deterioration rates
  - + Decision Trees/matrices
  - + Treatments in their toolboxes
- ✘ Education: Update the FHWA NHI Course no. 131104 Pavement Preservation: Integrating PP Practices and PMS.
- ✘ Develop a section in the SEPPP webpage to showcase PP into PMS Integration **Success Stories** that can be populated by active SEPPP members.

# 2015 TASK FORCE RECOMMENDATIONS

---

- ✘ Performance based on **ride** along **is not enough**. Support research or synthesis to identify performance factors that are more indicative of best conditions & timing to apply pavement preservation treatments.
- ✘ Conduct a NCHRP Synthesis Study to document the capabilities of PMS to integrate pavement preservation strategies.
- ✘ Both activities should be coordinate with TRB, AASHTO, FHWA, Industry, Academia, etc.

# MAP-21 PROPOSED RULES

---

- ✘ Risk-based Asset Management Plan
  - + <http://www.regulations.gov/#!docketDetail;D=FHWA-2013-0052>
  - + Deadline to submit comments: **April 21**
- ✘ National Performance Management Measures
  - + <http://www.regulations.gov/#!docketDetail;D=FHWA-2013-0053>
  - + Deadline to submit comments: **May 8**
- ✘ FHWA Transportation Performance Management Map 21 Rules webpage
  - + <http://www.fhwa.dot.gov/tpm/rule.cfm>

# 9<sup>th</sup> International Conference on Managing Pavement Assets



**May 18-21, 2015 • Washington D.C. Metropolitan Area • U.S.A.**

- Home
- Agenda
- Lodging & Travel
- Call for Papers
- Sponsors & Exhibitors

Home

The Transportation Research Board (TRB), the Virginia Department of Transportation (VDOT), Virginia Tech, the Federal Highway Administration (FHWA), and the American Association of State Highway and Transportation Officials (AASHTO) and the World Road Association (PIARC) are organizing the 9th International Conference on Managing Pavement Assets (ICMPA9) in Alexandria, Virginia, located in

**Notices**

Papers are due. **August 15, 2014.**  
See [Call for Papers](#) for more information.

[HTTP://ICMPA9.ORG/](http://ICMPA9.ORG/)

# QUESTIONS

---

Luis Rodriguez

FHWA Resource Center

61 Forsyth St. SW

Suite 17T26

Atlanta, GA 30303

Tel: 404-562-3681

Email: [luis.rodriquez@dot.gov](mailto:luis.rodriquez@dot.gov)

Jim Maxwell

Tennessee DOT

6601 Centennial Blvd.

Nashville, TN 37243

Tel: 615-253-0012

Email: [james.maxwell@tn.gov](mailto:james.maxwell@tn.gov)